

Presidential Reflections

Kim S. Phipps

August 20, 2024

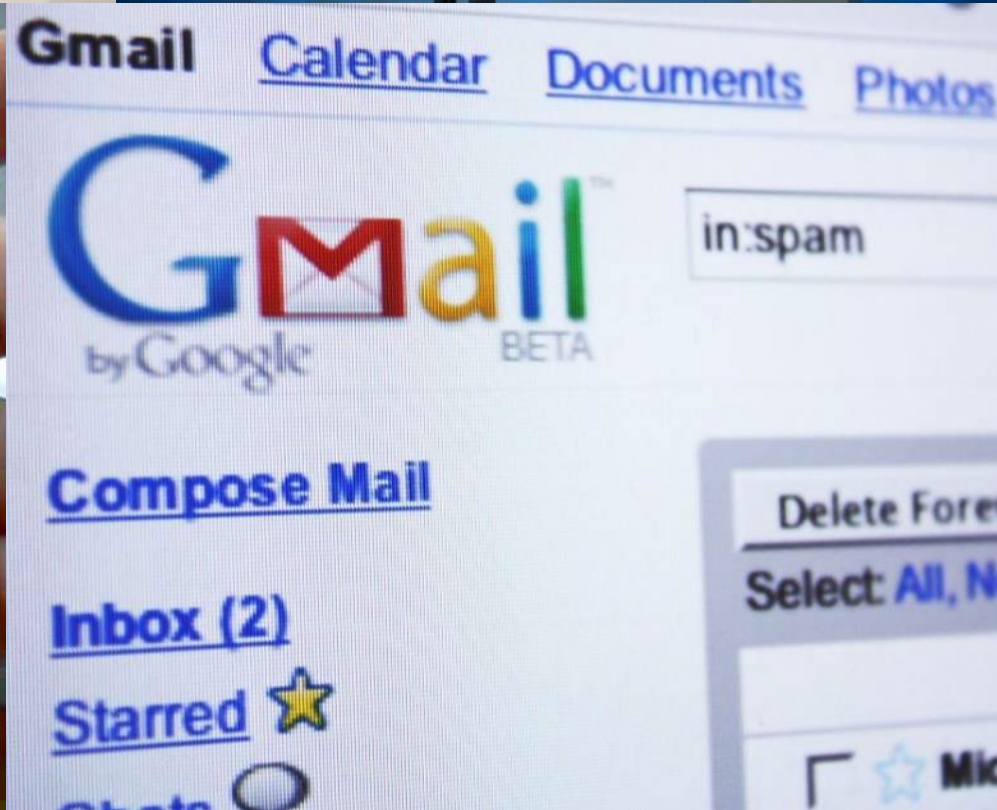


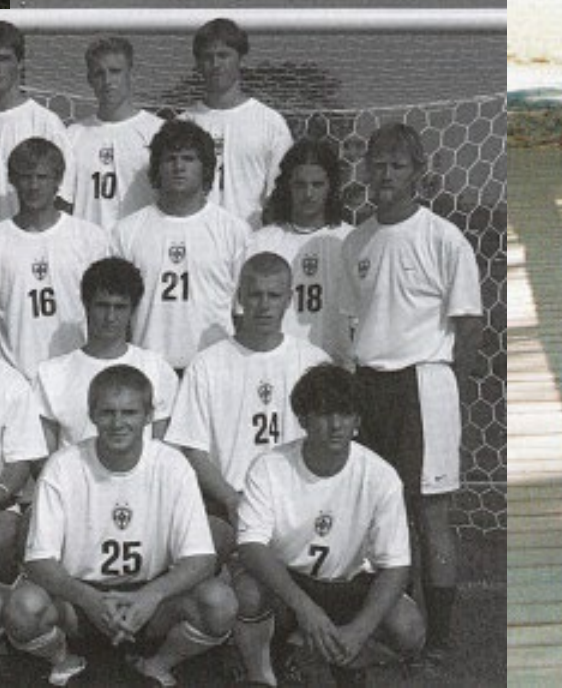
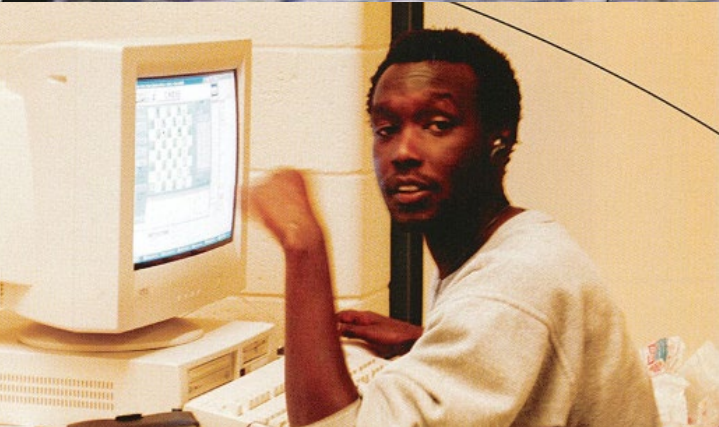
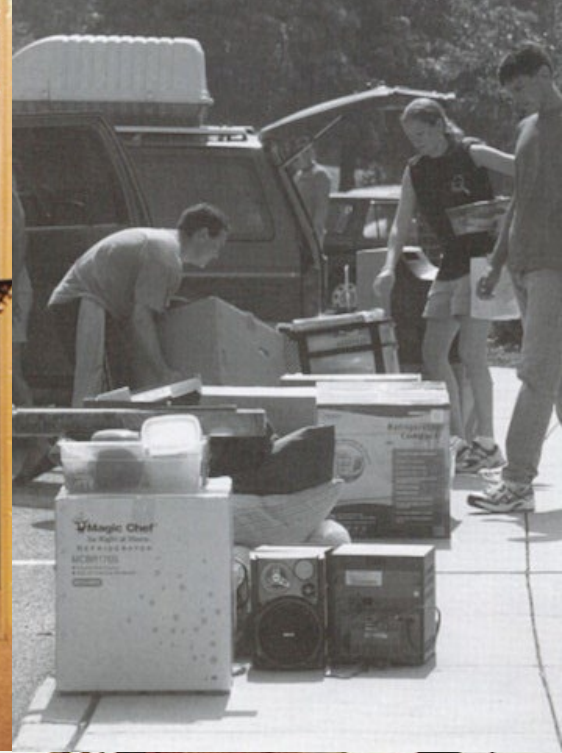


Dr. Craig Sider

Chair of the Board of Trustees











Courage



Reconciliation



Hope



ES WALL OF

Hospitality



“Receiving the other, from the heart, into my own dwelling place and providing for the need, comfort, and delight of the other with all openness, respect, freedom, tenderness, and joy that love itself embodies.”

Marjorie Thompson, Soul Feast

Hospitality



Courage



Reconciliation



Hope



Courage





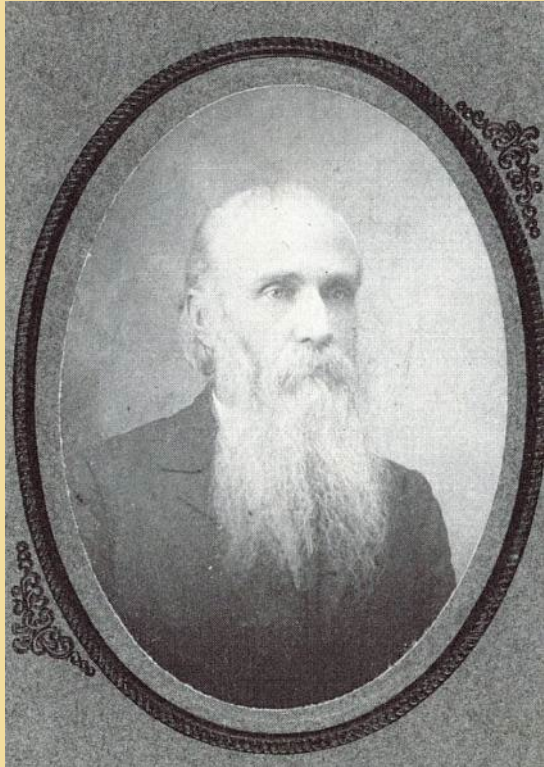
Strength
in the face of fear

Peace
in the midst of change



Perseverance
in times of hardship

Messiah's Founder



S.R. Smith



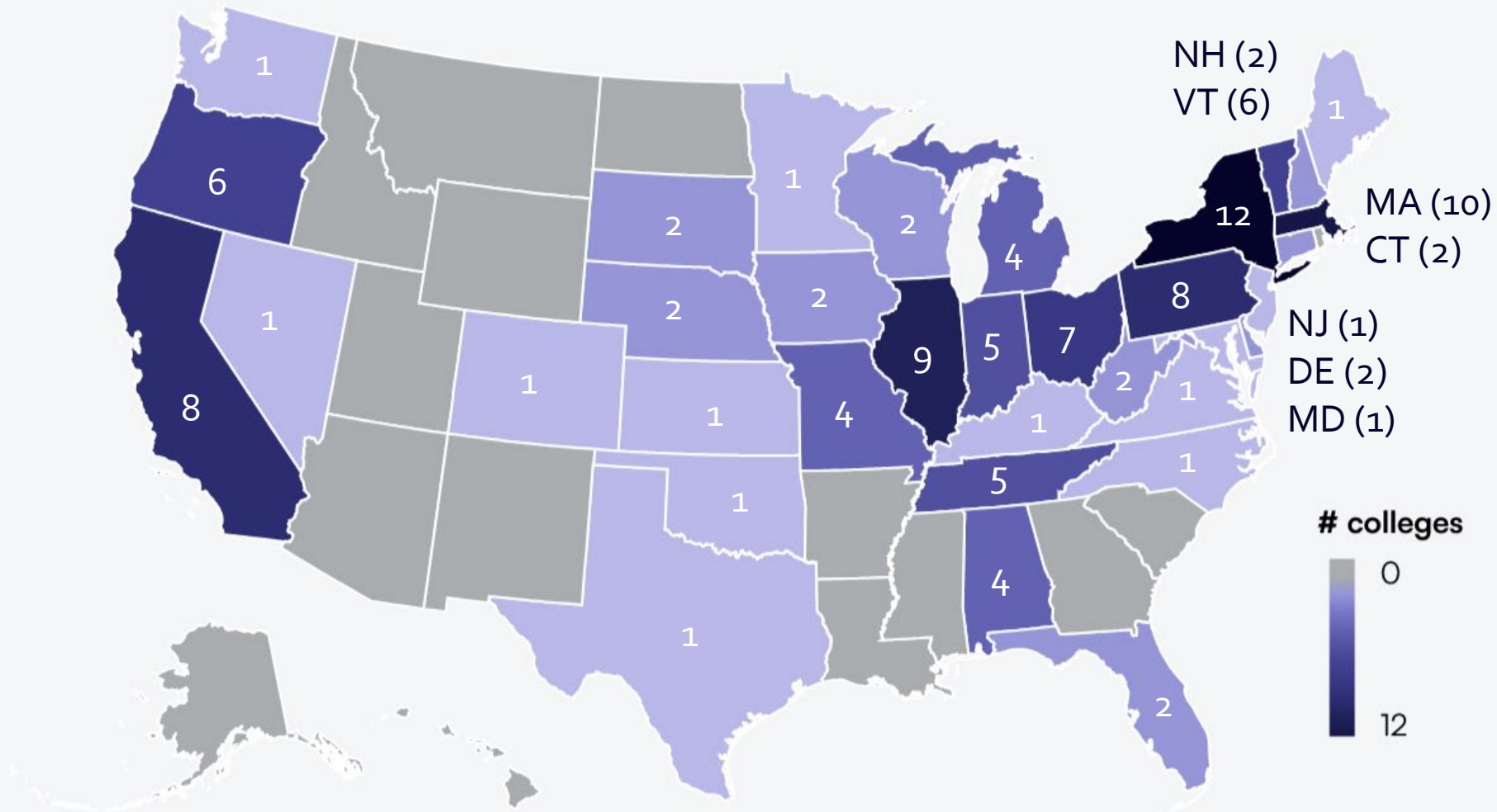
S.R. Smith Company's Noodle Factory





Nonprofit college closures and mergers since 2016 by state

119 total closures and mergers









Reconciliation



Mission Statement

Our mission is to educate men and women toward maturity of intellect, character and Christian faith in preparation for lives of service, leadership and **reconciliation** in church and society.



2 Corinthians 5:17-18

RECONCILIATION

GOD'S LANGUAGE TO HEAL A BROKEN WORLD





So if anyone is in Christ, there is a new creation:
everything old has passed away; look, new things have
come into being! All this is from God, who reconciled
us to himself through Christ and has given us the
ministry of reconciliation.

2 Corinthians 5:17-18





Reconciliation is a **Journey**

Reconciliation in Action



President C.N. Hostetter Jr.



Sakimura Family











Hope

We know how the story ends!





**“We must
teach
students to
be people of
hope.”**




“The capacity to be amazed
at the unending power that
can be generated by the
meeting and trading of lives”

Walter Bruggeman on hope






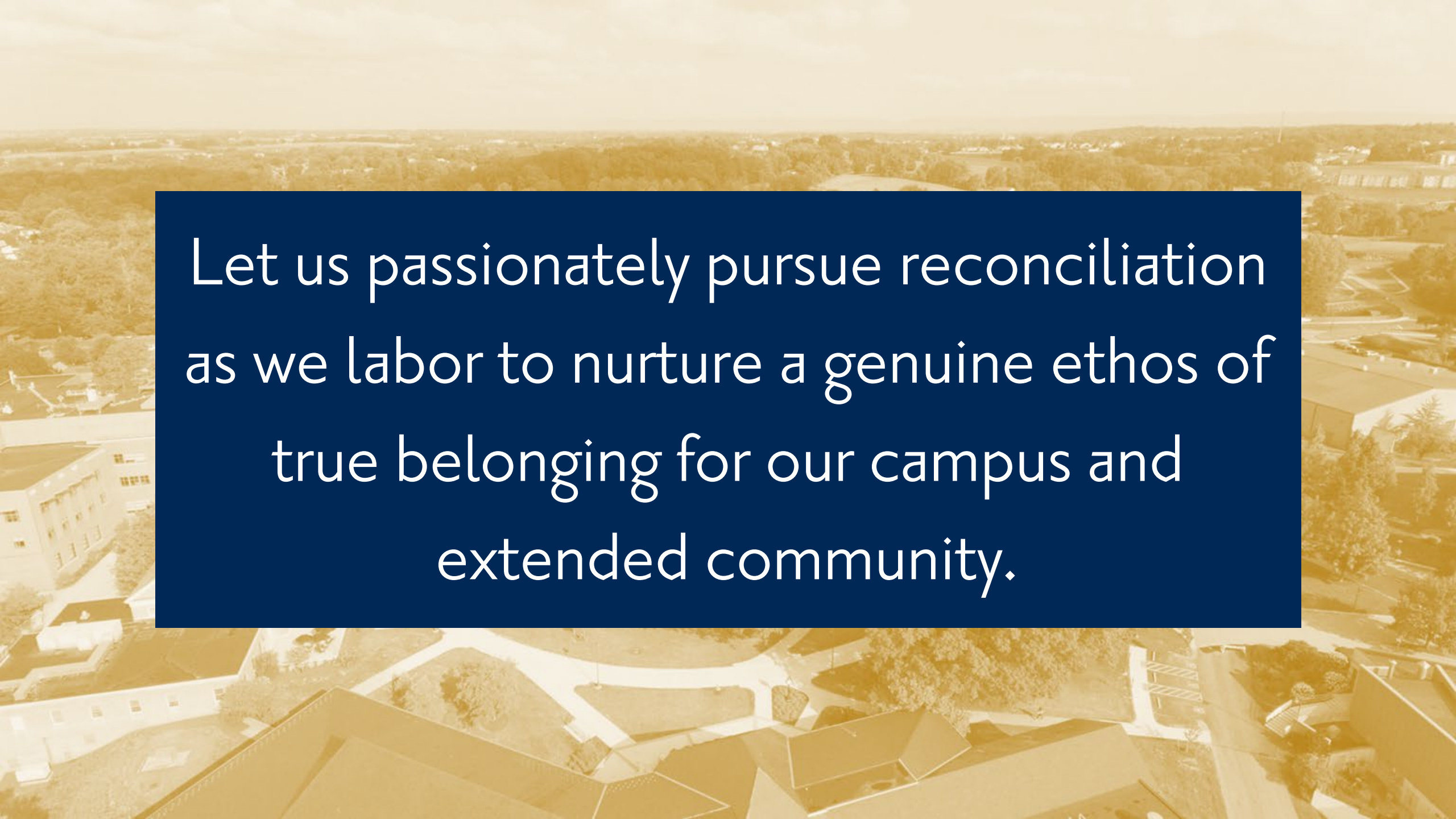
Our relationships create *hope*

An aerial photograph of a university campus, showing various buildings, courtyards, and green spaces. The image is overlaid with a semi-transparent blue rectangle in the center, which contains white text. The overall color palette is warm, with a yellowish-orange tint.


Let us humbly engage in constructive learning with colleagues and students and emulate civility and compassion.

An aerial photograph of a university campus, showing various buildings, courtyards, and green spaces. The image is overlaid with a semi-transparent blue rectangle in the center, which contains white text. The overall color palette is warm, with a yellowish-orange tint.

Let us actively mentor our students to
think critically and avoid the extremes of
polarization and division.

An aerial photograph of a university campus, showing various buildings, courtyards, and green spaces. The image is overlaid with a semi-transparent blue rectangle in the center, which contains white text. The overall color palette is warm, with a golden-yellow tint.

Let us passionately pursue reconciliation
as we labor to nurture a genuine ethos of
true belonging for our campus and
extended community.

An aerial photograph of a campus with various buildings, trees, and a large open area. A semi-transparent blue rectangle is overlaid in the center, containing white text. The text is centered and reads: "Let us work to promote the Common Good by 'loving our neighbors as ourselves.'" The background image is in a warm, golden-brown color palette.

Let us work to promote the Common
Good by “loving our neighbors as
ourselves.”





**Things change, and
God is in it all.**

*The late K.B. Hoover,
Professor Emeritus*

Things change, and God is in it all.

