

# SUSTAINABILITY AT MESSIAH DURING COVID-19

The world is undergoing many changes in the midst of COVID-19, and Messiah is no exception. While some necessary health and safety measures mean greater waste in our dining practices and more individuals riding in cars instead of groups, there are other ways Messiah is working toward its commitment to Sustainability Practices and Climate Mitigation:



1

## BICYCLES

The world moved to two wheels in March as the bicycle industry experienced a 200% increase in bike sales. Messiah is experiencing similar interest.

- 18 of the 20 available Bikeshare Bikes are being rented to students (up from 6 bikes the previous year)
- campus safety officers will be using E-Bikes to navigate campus helping to reduce gasoline and its associated CO2 emissions each year by an estimated 10%

2

## COMPOST

Messiah's compost program is seen as best practice by peer schools in the region, and this year is no different. We are:

- Distributing over 100 individual compost buckets to apartments, including Oak Wood Hills
- Composting all pre-consumer food waste in Lottie, the Falcon, the Union, and Cafe Deim
- These practices reduce over 6,000 lbs. of food waste from the landfill each month

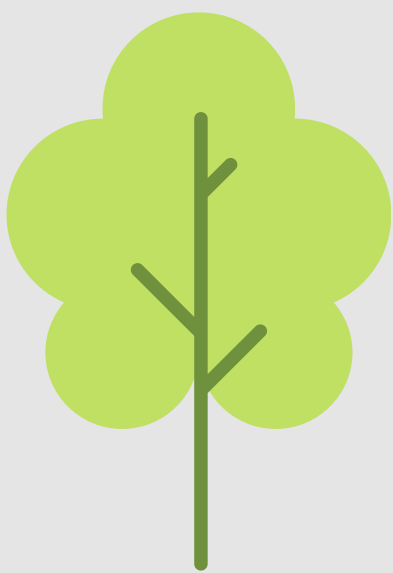


3

## TREES

In partnership with the Alliance for the Chesapeake Bay, Messiah is continuing its promotion of biodiversity by reforesting and converting land use across 7 acres of campus land to support carbon sequestration, climate mitigation, and habitat development.

- Over 600 trees
- Over 1 acres of wildflower meadow
- Over 50 different species of native trees, flowers, and grasses



4

## COMMUTING

Work from home is the new normal. It is a complex reality with unintentional impacts, but the environmental benefits of it are enticing. Prior to March 2020, 86% of workers in the U.S. commuted to work in a private automobile, now 42% are working from home. At Messiah an estimated 25% of employees are working from home at least occasionally, we anticipate commuting associated CO2 emissions to decrease by 260 tons from previous years.



5

## PRINT RELEASE

In 2017, Messiah began "re-leafing" all of the paper used on campus. As paper is used, PrintReleaf calculates the tree equivalent and helps to reforest an area of the world chosen by the student body each year. Since 2017 PrintReleaf has helped Messiah offset 12.6 million pages by planting 1,500 trees

