

THE UP CYCLE

Messiah University's Office of Sustainability
Official Newsletter

IN THIS ISSUE:

Sustainability on
Campus
page 01

What is Biodiversity?
page 03

Waste Updates!
page 04

UPCOMING EVENTS:

**Trunk or
Treat**

Nov 1 | Murray Library

**Fall
Festival**

Nov 9 | Restoration House
(528 Grantham Road)



Sustainability on Campus

By: Maggie Stauder, Sustainability Engagement Coordinator



Earlier this month, the Office of Sustainability had a blast hosting our annual Sustain-A-Fest. Many community organizations and campus clubs participated, including Ashcombe Farm and Greenhouses, the Cracked Pot, Tucker&Co Bakery Café, Ten Thousand Villages, Ecoasis, Earthkeepers Club, the Oakes Museum, Restoration House, and the Biology Club. Students enjoyed petting Gilbert the tortoise, drinking fresh-made apple cider, running on the smoothie bike, receiving free plants, listening to live music, and more.

The purpose of Sustain-A-Fest is to celebrate sustainability and the ecological mindfulness that comes with being a responsible steward of our planet. You may wonder - what can I do as a college student at Messiah University to practice sustainability?

5 Simple Ways You Can Be Kind to the Planet on Campus:

- **Sustainable Living Survey:** Fill out the Sustainable Living Survey (coming in early November 2024) to find out where you fall within a sustainable lifestyle, test your sustainability knowledge, and learn more about different sustainable practices you can add to your routine.
- **Compost Buckets:** If you cook in your dorm or apartment, drop by the Office of Sustainability for a compost bucket so you can responsibly dispose of your food waste.
- **Lottie Accumulator:** Ever notice the moving shelves that take your Lottie dishes? You can leave all uneaten food, as well as napkins and other compostable trash on your plate. The Office of Sustainability collects the compost from the Lottie accumulator and adds it to our compost piles (where we get garden soil!).
- **Carpool:** Simple as it seems, carpooling to the store or home for a weekend can reduce emissions quite a bit, plus be lots of fun!
- **Keep tuned to our Sustainability emails/posters for events!** Email sustainability@messiah.edu to be added to our distribution list and be the first to hear about our events!



Students received free plants from Ashcombe Farm



Apple Cider made by Restoration House



Students petting Gilbert the tortoise



What is Biodiversity?

By: Chad Doxzen, Biodiversity Coordinator

Biodiversity refers to the variety of plants and animals that reside in a particular area and how they interact. Biodiversity is key to a balanced environment, so it's an area of focus that the Office of Sustainability invests in throughout campus. As the Biodiversity Coordinator, I focus on educating students on the importance of biodiversity, while also helping maintain healthy habitats on campus. One big way we promote biodiversity on campus is through tree planting. Our tree planting event was October 30th and we planted over 150 trees! We planted 100 trees at the base of Cemetery Hill and 50 trees above the Starry Baseball Field. Each tree we plant makes a difference!



Tree planting at the base of cemetery hill

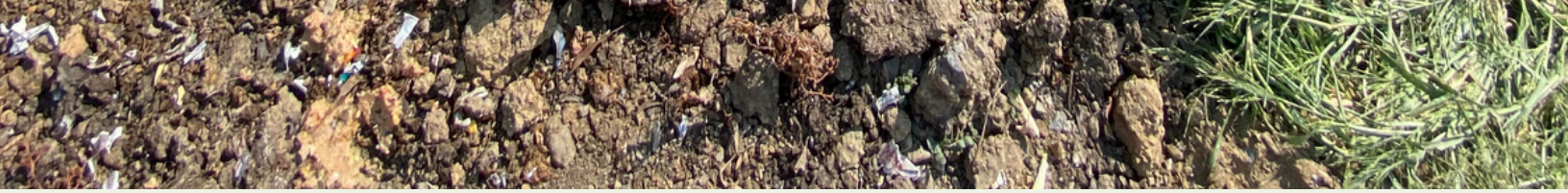


Ryan Davis - Senior Forest Projects Manager in the PA Office

Tree plantings on the property are important because they help to provide a healthy habitat for wildlife on campus, as well as helping to offset carbon emissions. It's through projects like this that allow students to get involved in helping keep our campus environmentally balanced and healthy. Our current plan is to include more projects that involve improving biodiversity on campus. I am very excited to take part in helping keep wildlife and plant life living healthily here on campus.



Volunteers at tree planting



Waste Updates!

By: Danielle Leppert, Waste Coordinator

Compost is looking great on campus! In September, we doubled the compost that we collected in August. Here are some statistics to see the amount of food we have collected and kept out of the landfill up until fall break, October 18:

August: 1,028.6 pounds

September: 2,669.8 pounds

October: 2,223.1 pounds

We also have a new organics collector! Wesley Paris is our new organics collector and collects compost from our dining facilities and our extension bins located behind each of the dorm and apartment buildings.

In September we started picking up compost bins from Lottie that maxed out our scale. Thank you to the Lottie Nelson Dining Hall, the Falcon, the Union, Café Diem, and the grounds department for our continued partnership in making this possible.

As a reminder, remember to throw away all plastic (salad dressing packets, ice cream packaging, etc.) before placing your tray on the conveyor belt. Plastic that does not get thrown away ends up getting cut up in the SOMAT machine and the compost we gather that has plastic in it becomes unusable.



Wesley burying pre-consumer waste in the soil

We partner with the Food Recovery Network and Lottie to donate leftover pans of food to the Bethesda Men's Shelter each week. Thank you to Wesley Paris and Jared Canepari, our volunteers who donate the food to the Bethesda Men's Shelter weekly. Here is how much food we have donated and diverted from the landfill:

September: 48.6 pounds/7 trays

October: 208.4 pounds/22 trays

Stop by the Office of Sustainability (ECC 159) to check out a free compost bucket for your dorm or apartment.